

MICHIGAN COLLEGIATE

APRIL 2026 ELEMENTARY LUNCH



Monday	Tuesday	Wednesday	Thursday	Friday	Alternatives
		1	2	3	
		Spring Break!	Spring Break!	Spring Break!	
6	7	8	9	10	April 6-10
Chicken Patty on WW Bun, Potato Wedges 100% Fruit Juice Milk	Beef and Cheese Taco with WG Tortilla Refried Beans, Orange, Milk	Pizza Cucumbers Apple Milk	Chicken Tenders Oven Brown Potatoes Banana Milk	Pizza Romaine Lettuce Mixed Fruit Cup Milk	A) Ham and Cheese on WW Bun with Lettuce and Tomato B) Chef Salad with Whole Wheat Roll
13	14	15	16	17	April 13-17
Chicken Alfredo Whole Wheat Roll Corn Peaches Fruit Cup Milk	Walking Taco WG Chips Refried Beans Applesauce Milk	Pizza Veggie Sticks Apple Milk	Grilled Cheese on WW Bread Carrots Banana Milk	Pizza Broccoli Florets Orange Milk	A) Turkey and Cheese on WW Bun with Lettuce and Tomato B) Taco Salad with WG Tortilla Rounds
20	21	22	23	24	April 20-24
All Beef Hamburger WW Bun Baked Beans Mandarin Orange Fruit Cup, Milk	Beef and Cheese Nacho w/ WG Chips Carrots Applesauce Milk	Pizza Cucumbers Apple Milk	Pancakes Sausage Oven Brown Potatoes Banana Milk	Pizza Romaine Lettuce Mixed Fruit Cup Milk	A) Chicken Salad Wrap on WW Tortilla B) Yogurt Parfait with Cheese Stick
27	28	29	30		April 27-May 1
All Beef Hot Dog on a WW Bun Baked Beans Peach Fruit Cup Milk	Beef and Cheese Taco with WG Tortilla, Carrots, Applesauce, Milk	Pizza Veggie Sticks Apple Milk	Bosco Sticks Corn Banana Milk		A) Italian Sub on WW Bun with Lettuce and Tomato B) Crispy Chicken Salad, WW Roll

Please Note:
Due to nationwide disruptions in the food and supply chain and based upon manufacturer and distributor product availability, this menu is likely to change with minimal notice.

All lunches include Meat or Meat Alternate, Fruits and Vegetables, Bread or Bread Equivalent, and Milk.

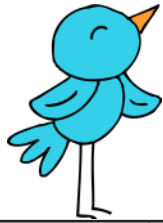
Milk offered: Fat Free Chocolate or Low Fat White



All alternatives served with vegetable of the day.

WW = Whole Wheat
WG = Whole Grain

This institution is an equal opportunity provider.



MICHIGAN COLLEGIATE

APRIL 2026 MIDDLE SCHOOL LUNCH



Monday	Tuesday	Wednesday	Thursday	Friday	Alternatives
		1	2	3	
		Spring Break!	Spring Break!	Spring Break!	
6	7	8	9	10	April 6-10
Beef and Bean Chili with Potato Wedges Whole Wheat Roll 100% Fruit Juice Milk	Beef and Cheese Taco with WG Tortilla Refried Beans, Toppings Bar, Orange, Milk	No Lunch	No Lunch	Pizza Cucumbers 100% Fruit Juice Milk	A) Ham and Cheese on WW Bun with Lettuce and Tomato B) Chef Salad with Whole Wheat Roll
13	14	15	16	17	April 13-17
Chicken Alfredo Whole Wheat Roll Corn Peaches Fruit Cup Milk	Walking Taco WG Chips Toppings Bar, Refried Beans, 100% Fruit Juice, Milk	Pizza Romaine Lettuce Salad Bar Apple Milk	Grilled Cheese with WW Bread Tomato Soup Banana, Milk	Pizza Broccoli Florets Orange Milk	A) Turkey and Cheese on WW Bun with Lettuce and Tomato B) Taco Salad with WG Tortilla Rounds
20	21	22	23	24	April 20-24
Bosco Sticks Baked Beans Mandarin Orange Fruit Cup Milk	Beef and Cheese Nacho w/ WG Chips Carrots, Toppings Bar, Applesauce Milk	Pizza Romaine Lettuce Salad Bar Apple Milk	Pancakes Sausage Oven Brown Potatoes Banana Milk	Pizza Cucumbers 100% Fruit Juice Milk	A) Chicken Salad Wrap on WW Tortilla B) Yogurt Parfait with Cheese Stick
27	28	29	30		April 27-May 1
All Beef Hot Dog on WW Bun Baked Beans Toppings Bar, Peach Fruit Cup Milk	Beef and Cheese Taco with WG Tortilla, Toppings bar, Carrots, 100% Fruit Juice, Milk	Pizza Romaine Lettuce Salad Bar Apple Milk	Bosco Sticks Corn Banana Milk		A) Italian Sub on WW Bun with Lettuce and Tomato B) Crispy Chicken Salad, WW Roll

Please Note:
Due to nationwide disruptions in the food and supply chain and based upon manufacturer and distributor product availability, this menu is likely to change with minimal notice.

All lunches include Meat or Meat Alternate, Fruits and Vegetables, Bread or Bread Equivalent, and Milk.

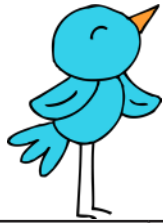
Milk offered: Fat Free Chocolate or Low Fat White



All alternatives served with vegetable of the day.

WW = Whole Wheat
WG = Whole Grain

This institution is an equal opportunity provider.



MICHIGAN COLLEGIATE

APRIL 2026 HIGH SCHOOL LUNCH



Monday	Tuesday	Wednesday	Thursday	Friday	Alternatives
		1	2	3	
		Spring Break!	Spring Break!	Spring Break!	
6	7	8	9	10	April 6-10
Beef and Bean Chili with Potato Wedges Whole Wheat Roll Applesauce 100% Fruit Juice Milk	Beef and Cheese Taco with WG Tortilla Refried Beans, Toppings Bar, Orange, 100% Fruit Juice, Milk	No Lunch	No Lunch	Pizza Cucumbers Mixed Fruit Cup 100% Fruit Juice Milk	A) Ham and Cheese on WW Bun with Lettuce and Tomato B) Chef Salad with Whole Wheat Roll
13	14	15	16	17	April 13-17
Chicken Alfredo Whole Wheat Roll Corn Peaches Fruit Cup 100% Fruit Juice, Milk	Walking Taco WG Chips Toppings Bar, Refried Beans, 100% Fruit Juice, Applesauce, Milk	Pizza Romaine Lettuce Salad Bar Apple Milk	Grilled Cheese with WW Bread Tomato Soup Banana, 100% Fruit Juice, Milk	Pizza Broccoli Florets Orange 100% Fruit Juice Milk	A) Turkey and Cheese on WW Bun with Lettuce and Tomato B) Taco Salad with WG Tortilla Rounds
20	21	22	23	24	April 20-24
Bosco Sticks Baked Beans Mandarin Orange Fruit Cup, 100% Fruit Juice, Milk	Beef and Cheese Nacho w/ WG Chips Carrots, Toppings Bar, 100% Fruit Juice, Applesauce Milk	Pizza Romaine Lettuce Salad Bar Apple Milk	Pancakes Sausage Oven Brown Potatoes Banana 100% Fruit Juice, Milk	Pizza Cucumbers Fruit Cup 100% Fruit Juice Milk	A) Chicken Salad Wrap on WW Tortilla B) Yogurt Parfait with Cheese Stick
27	28	29	30		April 27-May 1
All Beef Hot Dog on WW Bun Baked Beans Toppings Bar, Peach Fruit Cup 100% Fruit Juice Milk	Beef and Cheese Taco with WG Tortilla, Toppings bar, Carrots, 100% Fruit Juice, Applesauce, Milk	Pizza Romaine Lettuce Salad Bar Apple Milk	Bosco Sticks Corn Banana 100% Fruit Juice Milk		A) Italian Sub on WW Bun with Lettuce and Tomato B) Crispy Chicken Salad, WW Roll

Please Note:
Due to nationwide disruptions in the food and supply chain and based upon manufacturer and distributor product availability, this menu is likely to change with minimal notice.

All lunches include Meat or Meat Alternate, Fruits and Vegetables, Bread or Bread Equivalent, and Milk.

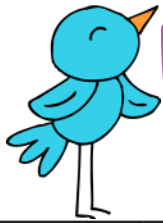
Milk offered: Fat Free Chocolate or Low Fat White



All alternatives served with vegetable of the day.

WW = Whole Wheat
WG = Whole Grain

This institution is an equal opportunity provider.



MICHIGAN COLLEGIATE

APRIL 2026 GSRP LUNCH



Monday	Tuesday	Wednesday	Thursday	Friday
		1	2	3
		Spring Break!	Spring Break!	Spring Break!
6	7	8	9	10
Chicken Patty on WW Bun, Potato Wedges 100% Fruit Juice Milk	Beef and Cheese Taco with WG Tortilla Refried Beans, Orange Milk	Pizza Cucumbers Apple Milk	Chicken Tenders Oven Brown Potatoes Banana Milk	Pizza Romaine Lettuce Mixed Fruit Cup Milk
13	14	15	16	17
Chicken Alfredo Whole Wheat Roll Corn Peaches Fruit Cup Milk	Walking Taco WG Chips Refried Beans Applesauce Milk	Pizza Veggie Sticks Apple Milk	Grilled Cheese on WW Bread Carrots Banana Milk	Pizza Broccoli Florets Orange Milk
20	21	22	23	24
All Beef Hamburger WW Bun Baked Beans Mandarin Orange Fruit Cup, Milk	Beef and Cheese Na- cho w/ WG Chips Carrots Applesauce Milk	Pizza Cucumbers Apple Milk	No School	No School
27	28	29	30	
All Beef Hot Dog on a WW Bun Baked Beans Peach Fruit Cup Milk	Beef and Cheese Taco with WG Tortilla, Carrots, Applesauce, Milk	Pizza Veggie Sticks Apple Milk	Bosco Sticks Corn Banana Milk	

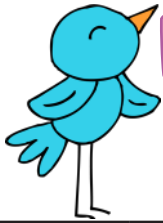
Please Note:
Due to nationwide disruptions in the food and supply chain and based upon manufacturer and distributor product availability, this menu is likely to change with minimal notice.

All lunches include Meat or Meat Alternate, Fruits and Vegetables, Bread or Bread Equivalent, and Milk.

Milk offered: Fat Free White or Low Fat White



This institution is an equal opportunity provider.



MICHIGAN COLLEGIATE

APRIL 2026 K-8 BREAKFAST

Monday	Tuesday	Wednesday	Thursday	Friday
		1	2	3
6	7	8	9	10
Assorted Zee Zee's Breakfast Bar, Assorted Applesauce, 100% Fruit Juice, Milk	Yogurt Asst. Graham Craisins, 100% Apple Juice, Milk	WG Chocolate Chip Mini Muffin Fruit Cup 100% Fruit Juice Milk	WW Strawberry Bagelful Orange 100% Fruit Juice Milk	Confetti Snack'n Waffle Apple Milk
13	14	15	16	17
Zee Zee's Strawberry Crisp Bar, Sour Apple Applesauce, 100% Fruit Punch, Milk	Bagelful Apple Slices 100% Orange Juice Milk	Assorted WG Mini Muffin Craisins, 100% Fruit Juice, Milk	Lemon Bread Slice Fruit Cup, 100% Fruit Juice, Milk	Ultimate Breakfast Round Banana 100% Fruit Juice Milk
20	21	22	23	24
Nutrigrain Bar Assorted Applesauce 100% Fruit Juice, Milk	WG Pull Apart Donuts Craisins 100% Fruit Juice, Milk	Cereal Bar Craisins, 100% Fruit Juice, Milk	Assorted Bagel with Cream Cheese Orange, 100% Fruit Juice, Milk	Pop Tarts Apple Milk
27	28	29	30	
Zee Zee's Blueberry Lemon Bar Applesauce 100% Fruit Punch Milk	Cheerios Cereal Cheese Stick Apple Slices, 100% Orange Juice, Milk	WG Blueberry Mini Muffin Craisins 100% Fruit Juice Milk	WW Cinnamon Bagelful Fruit Cup Juice Milk	

All breakfasts include Fruits and/or Vegetables, Bread or Bread Equivalent, and Milk.

Milk offered: Fat Free Chocolate or Low Fat White

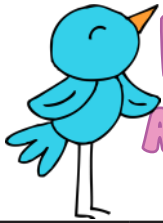
This institution is an equal opportunity provider.

Please Note:

Due to nationwide disruptions in the food and supply chain and based upon manufacturer and distributor product availability, this menu is likely to change with minimal notice.



This institution is an equal opportunity provider.



MICHIGAN COLLEGIATE

APRIL 2026 HIGH SCHOOL BREAKFAST

Monday	Tuesday	Wednesday	Thursday	Friday
		1	2	3
6	7	8	9	10
Assorted Zee Zee's Breakfast Bar, Assorted Applesauce, 100% Fruit Juice, Milk	Yogurt Asst. Graham Craisins, 100% Apple Juice, Milk	WG Chocolate Chip Mini Muffin Cheese Stick, Fruit Cup, 100% Fruit Juice, Milk	WW Strawberry Bagelful Orange 100% Fruit Juice Milk	Confetti Snack'n Waffle Apple Milk
13	14	15	16	17
Zee Zee's Strawberry Crisp Bar, Sour Apple Applesauce, 100% Fruit Punch, Milk	Bagelful Apple Slices 100% Orange Juice Milk	Assorted WG Mini Muffin, Cheese Stick Craisins, 100% Fruit Juice, Milk	Lemon Bread Slice Fruit Cup, 100% Fruit Juice, Milk	Ultimate Breakfast Round Banana 100% Fruit Juice Milk
20	21	22	23	24
Nutrigrain Bar, Assorted Applesauce, 100% Fruit Juice, Milk	WG Pull Apart Donuts Craisins 100% Fruit Juice, Milk	Cereal Bar Craisins 100% Fruit Juice Milk	Assorted Bagel with Cream Cheese Orange, 100% Fruit Juice, Milk	Pop Tarts Apple Milk
27	28	29	30	
Zee Zee's Blueberry Lemon Bar Applesauce 100% Fruit Punch Milk	Cheerios Cereal Cheese Stick Apple Slices, 100% Orange Juice, Milk	WG Blueberry Mini Muffin, Cheese Stick, Craisins 100% Fruit Juice Milk	WW Cinnamon Bagelful Fruit Cup Juice Milk	

All breakfasts include Fruits and/or Vegetables, Bread or Bread Equivalent, and Milk.

Milk offered: Fat Free Chocolate or Low Fat White

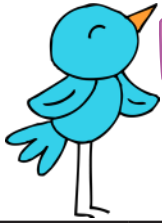
This institution is an equal opportunity provider.

Please Note:

Due to nationwide disruptions in the food and supply chain and based upon manufacturer and distributor product availability, this menu is likely to change with minimal notice.



This institution is an equal opportunity provider.



MICHIGAN COLLEGIATE

APRIL 2026 GSRP BREAKFAST

Monday	Tuesday	Wednesday	Thursday	Friday
		1	2	3
6	7	8	9	10
Cereal Assorted Applesauce Milk	Yogurt Asst. Graham Craisins, Milk	WG Mini Muffin Fruit Cup Milk	WW Strawberry Bagelful Orange Milk	Confetti Snack'n Waffle Apple Milk
13	14	15	16	17
Yogurt WW Graham Sour Apple Applesauce, Milk	Bagelful Apple Slices Milk	Assorted WG Mini Muffin Craisins, Milk	Lemon Bread Slice Fruit Cup, Milk	Cereal Banana Milk
20	21	22	23	24
Cereal Assorted Applesauce Milk	Yogurt Asst. Graham Craisins Milk	Assorted Cereal Craisins, Milk	No School	GSRP No School
27	28	29	30	
Yogurt WW Graham Applesauce Milk	Cheerios Cereal Cheese Stick Apple Slices, Milk	WG Blueberry Mini Muffin Craisins Milk	WW Cinnamon Bagelful Fruit Cup Milk	

All breakfasts include Fruits and/or Vegetables, Bread or Bread Equivalent, and Milk.

Milk offered: Fat Free White or Low Fat White

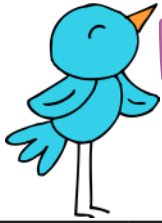
This institution is an equal opportunity provider.

Please Note:

Due to nationwide disruptions in the food and supply chain and based upon manufacturer and distributor product availability, this menu is likely to change with minimal notice.



This institution is an equal opportunity provider.



MICHIGAN COLLEGIATE

APRIL 2026 GSRP SNACK

Monday	Tuesday	Wednesday	Thursday	Friday
		1	2	3
6	7	8	9	10
WG Pretzels 100% Fruit Juice	WG Goldfish Milk	Banana 100% Fruit Juice	WG Cheez-Its 100% Fruit Juice	Assorted WG Graham Crackers 100% Fruit Juice
13	14	15	16	17
Yogurt 100% Fruit Juice	Apple Slices Milk	WG Pretzels 100% Fruit Juice	Assorted WG Graham Crackers 100% Fruit Juice	Cheese Stick 100% Fruit Juice
20	21	22	23	24
WG Pretzels 100% Fruit Juice	WG Goldfish Milk	Banana 100% Fruit Juice	No School	No School
27	28	29	30	
Yogurt 100% Fruit Juice	Apple Slices Milk	WG Pretzels 100% Fruit Juice	Assorted WG Graham Crackers 100% Fruit Juice	

This institution is an equal opportunity provider.

Please Note:
Due to nationwide disruptions in the food and supply chain and based upon manufacturer and distributor product availability, this menu is likely to change with minimal notice.



This institution is an equal opportunity provider.